

THE GREATER PHILADELPHIA STAMP & COLLECTORS CLUB

Successor to the Philadelphia Stamp Club
and The Collectors Club of Philadelphia, Founded 1885
American Philatelic Society – Chapter 18



<https://www.gpscc.org>

June 2023

Volume 11, Issue 6

NEXT MEETING

June 20, 2023, at 7:00 p.m.

Community Rooms
GIANT Supermarket
315 N. York Rd., Willow Grove, PA

Dinner:

For those who would like to join us for dinner beforehand, we will meet at Willow Tavern, about a block from GIANT, at 5:00 p.m. for cocktails followed by dinner at 5:30 p.m.

210 York Rd., Willow Grove, PA

IN THIS ISSUE

	<u>Page</u>
President's Message	1, 5
June Program	2
Upcoming Events	3
Awards and Honors	4
May Meeting Minutes	6-7
Stampless "RAIL ROAD CAR"	
Folded Letter from 1841	8-9
Did You Know?	10
CLUB SECRETARY NEEDED!	10
Philatelic Gathering	11



PRESIDENT'S MESSAGE – JUNE 2023

Paul F. Miller

I recently returned from a trip to Italy. It was fabulous! I participated in a land tour offered by Collette Tours, named "Italian Vistas."

Major cities we visited on the tour included: Rome; Sorrento; Florence; Venice, and Stresa (near Milan). Additional stops along the way included: Pompeii; Positano (the Amalfi coast); Pisa; Murano Island; Verona, and Simplon Pass, Switzerland. I saw so many sites and ate so much food. I estimated that our bus traveled about 1,200 miles during the trip! It was a very active adventure.

I had wanted to try to find some stamp places while I was in Italy, but the tour kept me so busy that I had very little time to find them. However, I was lucky enough to find a Vatican Post Office just outside St. Peter's Basilica. The office sold regular stamps that you could use on mail and had a mailbox so that you could get a Vatican postmark if you were to mail a letter or postcard! The office also sold special "collector" stamps. They are actual Vatican stamps but were more along the lines of special commemorative issues and mini-sheets. I decided to buy a couple (see my images on page 5).

(Continued on page 5)

JUNE 20, 2023, PROGRAM – YAMIL KOURI, JR., PRESIDENT OF BOSTON 2026

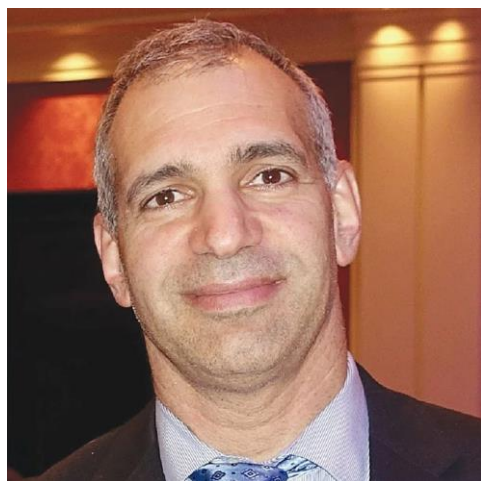
Every decade since the 1910s, the US has hosted an international philatelic exhibition. The 12th International Philatelic Exhibition of the US will take place in Boston from May 23-30, 2026. This will be an amazing event that every collector – from the beginning to the most advanced – will want to attend.

We are very fortunate to have as our speaker in June **Yamil H. Kouri Jr.**, president of BOSTON 2026. Yamil is a signatory of the [Roll of Distinguished Philatelists](#) and received the American Philatelic Society's [Luff Award](#) in 2020 for Exceptional Contributions to Philately.

Yamil will speak to us via video link. A Zoom meeting invitation has been sent to all members. If you did not receive it, please contact Mike Wilson at mwilson34407@gmail.com.



BOSTON 2026 WORLD EXPO



Yamil Kouri, Jr.



Since 1926, the US has issued a stamp or souvenir sheet to commemorate the international philatelic exhibition. This is the stamp for InterPhil, the 7th International Philatelic Exhibition, held in Philadelphia May 29-June 6, 1976. The stamp was issued on January 17, 1976, in Philadelphia.

NEW MEMBER

Our newest member is **Charles L. Fulforth IV**.

Charles's collection ranges from Revenue on Photographs 1863-1868 to U.S. Postal Automation beginning in August 1963 with TAGGANT coated stamps to France with a centerpiece being the 1854 80c TÊTE-BÊCHE cut-corner with a "paid" red circular cancel of England, among the rarest stamps in the world, to Balloon mail (Balloon Monte) during the Prussian siege of Paris in 1870 ending the Empire of Napoleon III. Welcome to the Greater Philadelphia Stamp & Collectors Club, Charles!



FREE DUES FOR 2023 OFFERED FOR NEW MEMBERS!

We will continue to offer free membership to new members through 2023 thanks to the idea that came up last year from one of our members to encourage new stamp collectors to join the Club!

So now is a good time to spread the word to friends to try out a membership in an active local stamp club!

Contact any officer for more information.

OFFICERS

President

Paul Miller

president@gpsc.org

VP & Programs

Phil Russell

vpprograms@gpscc.org

Treasurer

Bruce Marsden

treasurer@gpscc.org

Acting Secretary

Letty Moon

secretary@gpscc.org

Newsletter

Mike Wilson

newsletter@gpscc.org

Shows & Events

Alan Warren

showsevents@gpscc.org

UPCOMING CLUB MEETINGS 2023

Aug. 15 – Sept. 19 – Oct. 17 – Nov. 21 –
Dec.19 (Holiday Dinner)

UPCOMING EVENTS

STAMP SHOWS

July 8 – [Eastern Pennsylvania Stamp Show](#) (EPASS, bourse only), Allentown Philatelic Society, Schnecksville Fire Company, 4550 Old Packhouse Rd., Schnecksville, Pa.

September 2-4 – [BALPEX](#), Baltimore Hunt Valley Inn, 245 Shawan Rd., I-83 Exit 20 East, Hunt Valley, Maryland 21030

Make travel plans now!

July 17-22 – [APS Volunteer Work Week](#), Bellefonte PA

August 10-13 – [Great American Stamp Show](#), Cleveland, OH



AWARDS AND HONORS

Bruce Marsden won a large vermeil for his “The Natural and Social History of Switzerland” at the PIPEX show in Portland, Oregon in May.

Mike Wilson had an article published in the May-June 2023 edition of *First Days*, the publication of the American First Day Cover Society. His article was titled, “Signed First Day Covers from the Wisconsin Tercentenary Issue of 1934.”

In the same publication, **Alan Warren** published Part 22 of his series “Finland Birth Certificates.” (By the way, Alan signed the Roll of Distinguished Philatelists in 2019 and received the Luff Award for Exceptional Contributions to Philately in 2002.)



Bruce Marsden



Mike Wilson

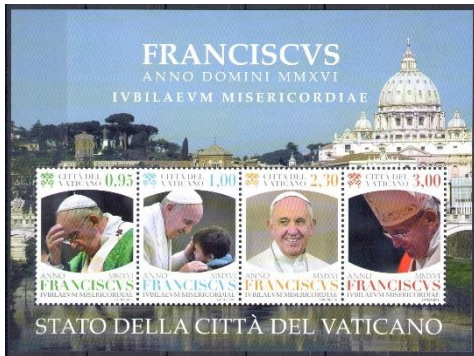


Alan Warren

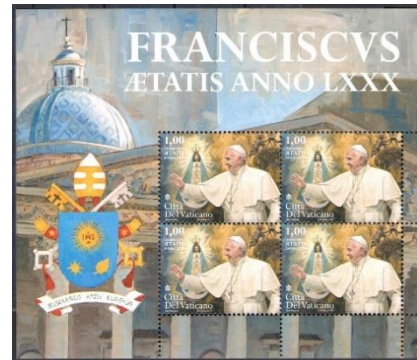
Sandra Margolies has a stamp montage displayed in the American Philatelic Society’s “[A Philatelic Memorial of the Holocaust](#).” In a little-known part of the history of the holocaust, some 20,000 Jews found safe haven in Shanghai. Sandra’s contribution to the memorial describes the conditions that the Jews faced in Shanghai. She made the montage in memory of her mother, who spent her childhood (10 years) living in the Shanghai Ghetto. A version of Sandra’s photo that you can zoom in on is available on the GPSCC [website](#).



Sandra Margolies's Photo Montage



Vatican; Scott #1858 – 1861 (2016 Pontification of Pope Francis)



Vatican; Scott #1884 (2016 The 80th Anniversary of the Birth of Pope Francis)

Since I acquired a few Vatican stamps, I decided to look up and share a few fun facts about Vatican City stamps...

- Vatican City began issuing stamps in 1929 following the signing of the Lateran Accords between the Holy See and the Kingdom of Italy. These agreements also provided for the issuance of coins by the Vatican City.
- From 1852 to 1868 the papal or Roman States issued stamps which carried the papal coat of arms in various denominations. These stamps are commonly referred to as the “Roman State Philately.” From Italian unification in 1870 (and the loss of the papal states to Italy) until August 1929, Vatican City did not issue any stamps or coins.
- On August 1, 1929, Vatican City issued its first set of new stamps known as the Conciliation Issue. Since that time, a few thousand additional issues have been produced by Vatican City covering many different topics – many religious. Today, you can find definitives, commemoratives, air mail, miniature sheets, semi-postal, special delivery, and postage due stamps, as well as envelopes, postal cards, and aerogrammes.

You can learn a whole lot more about Vatican City stamps and possible collecting interests at the Vatican Philatelic Society’s [website](#).

The Vatican Philatelic Society is the only society devoted exclusively to Vatican City and Pontifical State Philately. It is an American Philatelic Society (APS) affiliate (#129) and has been in existence for 70 years.

The trip was wonderful. Finding these stamps was icing on the cake. That’s what makes stamp collecting so great!



MINUTES OF THE MAY 16, 2023, GPS & CC MEETING

VP Phil Russell started the meeting in the absence of President Paul Miller.

Secretary's Report: We have 54 members. We had a visitor, Charles Fulforth IV, who became a member later at tonight's meeting.

As a reminder, in July there will be no meeting as we take our summer break.

There was no **Treasurer's Report** in the absence of the Treasurer, Bruce Marsden.

Old Business: Mike Wilson reminded us that the speaker for our June meeting will be Yamil Kouri, the President of Boston 2026 World Expo. Our Club has supported this show with a donation. Yamil will talk to those of us at the meeting by Zoom link. For those members who cannot attend, a Zoom link should be available.

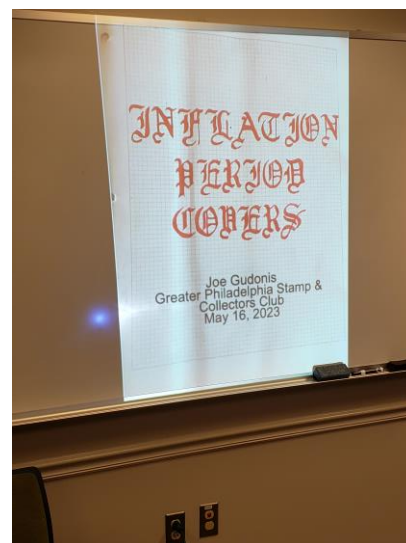
New Business: Mike Wilson showed us the black t-shirt with our GPSCC logo on it which can be ordered by May 31 by contacting him. In addition, we can also order coffee mugs, pens and caps with our name and logo on them. See his email of May 17 for details and pictures of the Club merchandise available.

Terri Kelly gave the Club stamps to donate to children through Upper Dublin Public Library.

Program: Joe Gudonis presented "German Inflation Covers, 1922 to 1923". He showed all the variable rate increases during this hyperinflation period in Post World War I Germany.



Joe Gudonis during his presentation



Title slide of Joe Gudonis's presentation. His full slide can be viewed [here](#).

MINUTES OF THE MAY 16, 2023, GPS & CC MEETING (CONTINUED)

Show & Tell & Discuss: Anne Gibby made a correction to her April Show & Tell information. The old postal card which she showed us was sent from Butterworth, South Africa, not Tasmania.

Joe Gudonis explained how his interests went from stamps, to ships on stamps, to model ships, to radio operated ships, to real ships and being a sailor on the *Gazella* which docks in Philadelphia.

Our new member, Charles Fulforth, told us of his many philatelic interests. He showed us a letter on very thin tissue-like paper which was sent out of Paris by hot air balloon in about 1868 when the city was surrounded by Prussian troops. He spoke of his interest in revenue stamps of the 1860s, fluorescent stamps of the 1960s and embossed covers from the 1870s.

Mike Wilson showed us a 1929 crash cover damaged by fire and an 1860 campaign postcard for Abraham Lincoln.

Barbara Weiss brought in examples from a collection she acquired which included tiny bundles of old stamps organized in groups of 100 per bundle. She asked for advice on how to proceed with sorting and organizing this collection.

Respectfully submitted by Letty Moon

CLUB SWAG SALE A SUCCESS!

Don't be shocked if you see some club members sporting t-shirts with the GPSCC logo at an upcoming stamp show or sipping coffee at a local café with a GPSCC mug! Orders totaled \$150, which is not bad for a first-time effort. I can always place another order if there is interest.

-Mike Wilson



"RAIL ROAD CAR" STAMPLESS LETTER FROM 1841

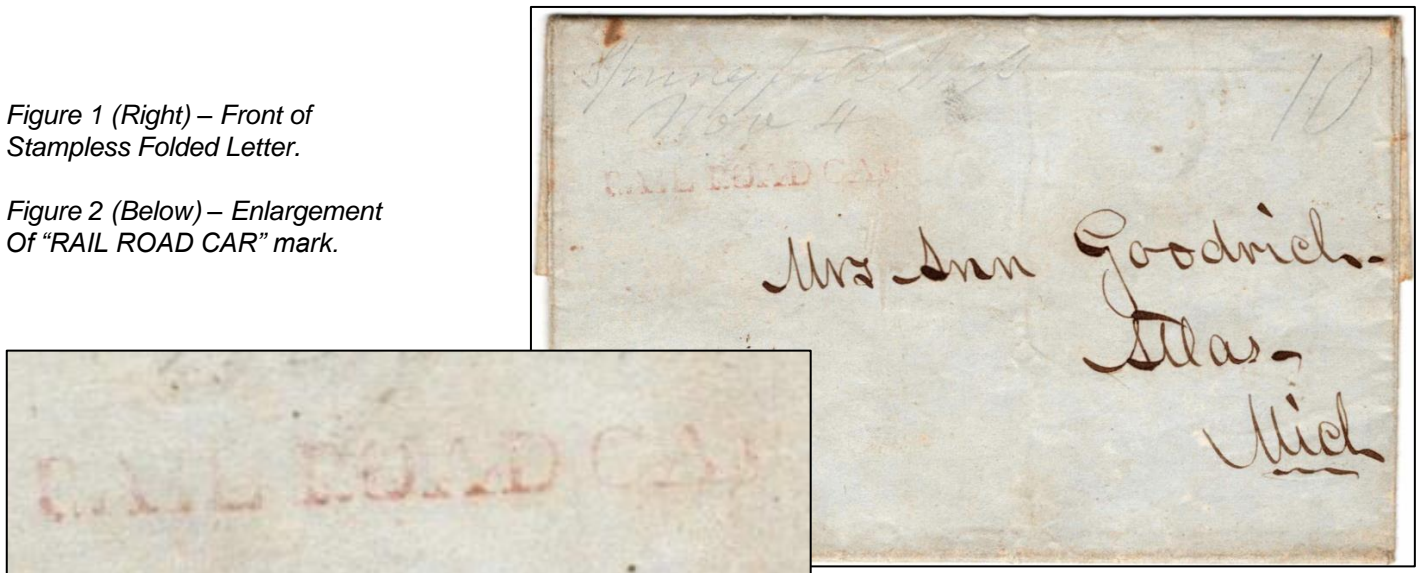
Mike Wilson

In the early 1840s, railroads were a very new form of transportation in the US. The first common carrier railroad in the US was the Baltimore & Ohio, which began operations in 1830 on 26 miles of track. By 1840, although track mileage had increased more than a 100-fold to roughly 2,800 miles, trains still connected together only a small portion of cities, and train mileage was but a fraction of what it would be at its peak of 254,000 miles in 1916. This folded letter and the letter writer traveled the rails in those early days.

The letter, which was sent from Springfield, Massachusetts on November 4, 1841, was carried aboard a train as indicated by the red "RAIL ROAD CAR" auxiliary stamp (Figures 1 and 2). In 1832, the Post Office contracted with some railroads to carry mail, and the US Congress officially designated railroads as official postal routes in 1838. Consequently, this is a relatively early example of official railroad mail.

Figure 1 (Right) – Front of Stampless Folded Letter.

Figure 2 (Below) – Enlargement Of "RAIL ROAD CAR" mark.



According to the *American Stampless Cover Catalog*, the red "RAIL ROAD CAR" stamp was used between Boston and Albany from 1841 to 1847. I'm not 100% sure of the rail lines on which this letter traveled, but it was probably some combination of railroads that merged in the late 1860s and early 1870s to form the Boston and Albany Railroad. Those would be the Boston and Worcester Railroad, the Western Railroad, and the Albany (or Castleton) and West Stockbridge Railroad.

The letter's destination was Atlas, Michigan, a village a tad southeast of Flint. It certainly did not travel by rail all the way there. Based on an 1846 rail map I found, the railroad could have gotten this letter as far as Niagara Falls, New York, and it would have traveled the rest of the distance by boat or coach.

"RAIL ROAD CAR" STAMPLESS LETTER FROM 1841 (CONTINUED)

The folded letter has a manuscript letter rate of "10" cents penciled in at the top-right of Figure 1. Just to the left of that in pencil is "Springfield Mass Nov 4." I assume those notations were made by the mail clerk in Springfield since they are in a different script than the rest of the letter. The charge of 10-cents was well below what the letter writer should have paid to send this letter from Springfield, Massachusetts to Atlas, Michigan, a distance of nearly 800 miles. Letters traveling over 400 miles at the time cost 25-cents. Maybe the clerk thought this letter was only traveling to Albany (a distance of around 80 miles), which would have cost 10-cents.

The letter was written by Enos Goodrich to his wife Ann Goodrich. Enos was born in New York in 1813 and came to Michigan in 1835 where he purchased 1,000 acres of land in Atlas Township. A year later his father and other family members joined him, and together they founded the village of Goodrich, which became a thriving community by the mid 1840s.

Enos was a prominent member of the community. He was elected to represent Goodrich in the Michigan legislature, built the Goodrich Mill in 1844, was commissioned the first postmaster of the Goodrich post office when it was established in 1846, and founded the Goodrich Bank.

In his obituary that ran in the *Detroit Free Press* of September 19, 1897, he was described as an "old settler" of Michigan. "He was a man of sterling integrity," the *Free Press* wrote, "and had many notable traits of character." Enos is buried at the Goodrich Cemetery.

Ann was born in 1822 also in New York. Her mother died when she was an infant, and Ann was raised by her aunt for a period of time. Her father subsequently remarried, and he moved Ann and the rest of his family to Atlas, Michigan in 1836. In 1838, at the age of 16, Ann married Enos. She was his lifelong partner and was instrumental in the development of Goodrich. Her obituary from 1890 said, "Coming to Michigan almost 54 years ago, she had seen the state grow up around her and had shown by her example how efficient may be the labors of woman in the building of states." She was survived by Enos and their two children, a daughter Matilda (1841-1904) and a son Enos (1845-1902). Ann is buried next to her husband in the Goodrich Cemetery.

This letter was one of five that Enos had written to Ann by this time in his journey, which was into its second week. The stop in Springfield was just an overnight stay before departing for Boston, which I assume was his final destination. The trip was likely a business trip since Enos talks about purchasing hardware in Albany and perhaps even sole leather on his way back through Albany. He asks Ann to "tell Reuben" about the leather. Reuben was Enos's brother, and the two were business partners. The letter assures Ann that he is well, and he encourages her to take care of herself.

The best part of the letter to me is Enos's observation of the train's speed. Much of his train trip was at night so he didn't see much of the countryside (nor did he get much sleep), but he complains that even during the daytime "the cars hurry on along so swiftly that there is little to be seen distinctly." Train speeds at the time topped out at about 50 miles per hour - slow in our day and age but breathtakingly fast for travelers accustomed to horse and buggy speeds!

DID YOU KNOW?

Mike Wilson

How many countries and other entities do you think have produced stamps for legitimate postal purposes? 200? 300? Try about 800!

According to the [international philately section](#) of the National Postal Museum, that's how many countries and other entities like the League of Nations and the United Nations have issued adhesive postage stamps since Great Britain issued the Black Penny in 1840. Have any stamps from Epirus in your collection?

It is tough to collect every stamp that has ever been issued. Estimates are that there are about 500,000 unique stamps and 10,000-15,000 new ones are issued each year. But it is feasible to collect one stamp from every entity that has ever issued a stamp. The National Postal Museum published a "Stamp for Every Country Album" a few years ago that you can download from our [website](#) if you are interested.

Epirus is a region in southeast Albania. Inhabitants set up a provisional government in February 1914 and were united with Greece in December 1914. In 1916, Franco-Italian forces occupied the area, giving it to Albania after World War I.



CLUB SECRETARY NEEDED

Letty Moon is stepping down after ten years of service. Thank you for your continued service Letty!

We are looking for a volunteer who could writeup minutes for our meetings and handle some communications with our members. The pay is great! Ok, it's zero, but think of the good karma you'll build up. And by the way, you don't need to be a female to apply.

Contact any officer if you could volunteer, and we will give you all the help that you could need!

CLUB MAILING ADDRESS

Greater Philadelphia Stamp & Collectors Club
P.O. Box 446
Willow Grove, PA 19090-0446

CALL FOR AUTHORS!

Have something philatelic that you would like to share? Know of an article from another publication that you think others would like to read? Send Mike Wilson a note at mwilson34407@gmail.com, and he'll include it in an upcoming newsletter.

CHECK OUT OUR WEBSITE!

If you haven't already done so, check out our new website! You can find it at <https://www.gpscc.org>. Spread the news – and the link!

REPORT OF THE MAY 20, 2023, PHILATELIC GATHERING

Thirteen philatelists gathered at the Chester County History Center (CCHC) in West Chester, PA to hear two outstanding presentations.

Ron Majors led off with an informative discussion entitled ["Canada-U.S. St. Lawrence Seaway: Its Commemorative Stamps and Major Varieties"](#). The stamp, issued in 1959, marked the opening of the Seaway and was a joint issue with a similar stamp of the United States. Using material from his own collection along with the definitive reference book on the subject – Charles Verge's "The 1959 St. Lawrence Seaway Joint Issue and its Invert," Ron explained how it was printed and showed examples of the invert on and off cover as well as with kiss-prints.

Dr. Charles J. DiComo followed up with a research study entitled ["The Development of Perforations on U.S. Postage Stamps by Toppan, Carpenter, Casilear & Company: 1855-1857"](#). Charles revisited the events preceding the purchase of the perforating machine by Toppan, Carpenter & Co. (TCC); review the inventors of the rotary perforating machine and the rouletting trial period by TCC with Perkins, Bacon and Bemrose in England; the conversion to a perforator by TCC, and the issuance of perforated 3¢ stamps in February 1857. Research determined that examples of the stamp with a vertical line that looks like it was made with a felt-tip marker, are in fact proofs utilized during the perforation trials. The proofs are also on a thinner paper that distinguishes them from normal stamps. Charles' never-ending research has been in progress for decades and is in tribute to his mentor W. Wilson Hulme, who pioneered this area and passed along his database and unpublished research prior to his passing.

Source: [Philatelic Society of Lancaster County](#)

JUNE 17, 2023, PHILATELIC GATHERING

10:00 am - Noon

Chester County Historical Society
225 N. High Street
West Chester PA 19380.

Dr. Gus Spector: **Acker Special Delivery.**

Mr. Kean Spencer: **The Wonderful Philippines** review.

Mr. A. J. Valente: **Toppan & Carpenter** found in the Crane correspondence of particular interest to specialists of the 1857 issue.



Ron
Majors



Dr. Charles
J. DiComo