



# THE PHILLY PHILATELIST

Award-Winning Newsletter of the Greater Philadelphia Stamp & Collectors Club

Founded 1904

American Philatelic Society – Chapter 18

April 2024

www.GPSCC.org

Volume 12, Issue 4

## NEXT MEETING

April 16, 2024 at 7:00 p.m.

Community Rooms  
GIANT Supermarket  
315 N. York Rd., Willow Grove, PA

### Dinner:

For those who would like to join us for dinner beforehand, we will meet at The W Tavern, about a block from GIANT, at 5:00 p.m. for cocktails followed by dinner at 5:30 p.m.

210 York Rd., Willow Grove, PA

## IN THIS ISSUE

	<u>Page</u>
President's Message	1, 4
April 16, 2024 Program	2
Awards and Honors	2
Upcoming Events	3
New Club Secretary!	4
Minutes of the March Meeting	5-6
Did You Know?	6
A Fun Stamp Poster!	6
Trans-Pacific Airmail – The First Flight	7
A Trans-Pacific Cover to Australia, 1941	8-9
Philatelic Gathering, March 23	10
Letters and Post Cards Exhibit	10



## PRESIDENT'S MESSAGE

*Paul F. Miller*

Everyone in our club enjoys their own personal stamp collection. We each put a lot of time, effort, and money into collecting what interests us the most. In return, we get hours of enjoyment from collecting, learning, and expanding our hobby.

I see from attendance at our club meetings that the enjoyment extends beyond just our own personal collections. Our presenters help to open our eyes and minds to other interesting topical areas of collecting, too. Even if we do not choose to collect in the same areas as others, it can be interesting to learn something new about a topic, or historical facts, that are represented by someone else's stamp collection.

So, this month I thought I would throw out two quick-hitter topics about enhancing the hobby that go beyond just your own personal collection – contribute and participate.

### Contribute

This is the time of the year when the American Philatelic Society (APS) rolls out its reminders/requests for contribution to the “Mighty Buck Club.” It is a simple and easy way to “contribute” to the hobby by making a contribution to the APS and the American Philatelic Research Library (APRL). I also wrote about this last [April](#) in my President's Message. We have this wonderful organization that supports all of us in this shared hobby. A small donation from many of us can go a long way to providing enhanced services and programs to APS members. Please consider making a [donation](#) to the APS/APRL.

(Continued on p. 4)

## PROGRAM FOR APRIL 16, 2024: "SCHOOL AND COLLEGE ILLUSTRATED ADVERTISING COVERS 1851-1869"

Our guest speaker this month is **Michael Heller**. Michael began collecting stamps more than 50 years ago and has been an ardent collector of U.S. postal history for most of these years. While he's maintained a lifelong passion for illustrated advertising covers, his other interests include registered, special delivery and U.S. to foreign destinations. Michael also has a strong interest in the stampless period, with a particular focus on postal rates. He is a lifetime member of the American Philatelic Society. He's been a member of the U.S. Philatelic Classics Society (USPCS) for nearly 50 years and served as a director of the USPCS for two terms. He has also been president of the New York Chapter of the USPCS for many years.

Michael will present to us via Zoom, but we will meet as usual at the Giant Community Center. For those of you unable to attend in-person, you can join us using this link:

<https://uso2web.zoom.us/j/84334342816?pwd=aEp4WEVkJBKMHIzE5kYy91Z3Zwdzo9>. If prompted, the meeting ID is 843 3434 2816 and the passcode is 095066.

## AWARDS AND HONORS

At the Stamp Collectors Club of Toledo Show in February, **Alan Warren** received a gold for his "Denmark: The Christian X Issues of the 1940s on First Day Covers."

Our newsletter editor **Mike Wilson** has an article in the April issue of *Airpost Journal*, published by the American Air Mail Society (AAMS), entitled "Cover Sent from USS Iowa Anchored in Tokyo Bay." Also, Mike will share his "National Air Mail Week: A Big Deal in 1938" presentation as part of the AAMS's programs at the Philatelic Show in Boxborough, Massachusetts, April 12-14.

**Mark Schwartz** has an instructive article on how exhibitors should prepare the title page, in the first quarter 2024 issue of *The Philatelic Exhibitor*, published by the American Association of Philatelic Exhibitors.



Alan Warren



Michael L. Wilson



Mark Schwartz

**OFFICERS***President*

Paul Miller

[president@gpscc.org](mailto:president@gpscc.org)*VP & Programs*

Phil Russell

[vpprograms@gpscc.org](mailto:vpprograms@gpscc.org)*Treasurer*

Bruce Marsden

[treasurer@gpscc.org](mailto:treasurer@gpscc.org)*Acting Secretary*

Letty Moon

[secretary@gpscc.org](mailto:secretary@gpscc.org)*Newsletter*

Michael L. Wilson

[newsletter@gpscc.org](mailto:newsletter@gpscc.org)*Shows & Events*

Alan Warren

[showsevents@gpscc.org](mailto:showsevents@gpscc.org)**CLUB MAILING ADDRESS**

Greater Philadelphia Stamp &  
Collectors Club  
P.O. Box 446  
Willow Grove, PA 19090-0446

**WEB SITE**[www.gpscc.org](http://www.gpscc.org)**FOLLOW US ON INSTAGRAM**[@gpscc19090](https://www.instagram.com/gpscc19090)**UPCOMING CLUB MEETINGS**

May 21 – Jun. 18 – Aug. 20 – Sep. 17 – Oct. 15 – Nov. 19 – Dec. 17 (Holiday Dinner)

**UPCOMING EVENTS**

**April 12-14** – [Philatelic Show 2024](#), Boxboro Regency Hotel and Conference Center, 242 Adams Place, Boxborough, MA.

**May 4** – [DELPEX](#), Nur Shrine Center, 198 S. DuPont Parkway U.S. Route 13, New Castle, DE.

**June 1** – [NEPPEX Northeastern Pennsylvania Stamp Show](#), Bernardine Hall at Saints Peter and Paul Church, 14 Hudson Rd., Plains, PA (bourse only).

**June 7-9** – [NAPEX](#), McLean Hilton at Tyson's Corner, 7920 Jones Branch Dr., McLean, VA

**June 22-23** – [SCOPEX](#), Mount Nittany Philatelic Society, American Philatelic Center, Bellefonte, PA.

**July 15-19** – [APS Volunteer Work Week](#), American Philatelic Center, Bellefonte, PA.

**August 15-18** – [Great American Stamp Show '24](#), Connecticut Convention Center, Hall AB, 100 Columbus Blvd., Hartford, CT.

**FREE DUES FOR 2024 OFFERED FOR NEW MEMBERS!**

We will continue to offer free membership to anyone who joins during 2024. We are able to do this because of a generous donation by a GPSCC member to encourage stamp collectors to join the GPSCC.

## NEW CLUB SECRETARY!

We are very pleased to announce that Robert Cohen will be the new secretary starting June 1, 2024. Thank you for stepping up, Robert!

Robert has been a GPSCC member for about five years and enjoys collecting U.S. mint stamps and first day covers and educating children about stamp collecting.

Robert and his wife eat out at Graeme Park Pizza and have become friends with Izzy, a server there. Izzy knows that he's a messy eater, so as a holiday present she gave Robert a bib (right). According to Robert, "My wife told me I can only wear it there!"

Letty Moon will continue to serve as acting secretary until Robert assumes his duties. We'll be sure to provide appropriate recognition for Letty's long service to the club at an upcoming meeting.



*Robert Cohen with the bib he can only wear at Graeme Park Pizza – and at GPSCC meetings!*

## PRESIDENT'S MESSAGE (CONTINUED)

### Participate

We are very fortunate to have many high-quality stamp shows throughout the country. Even better is the fact that some of these stamp shows are in our own (general) backyard. Many of these stamp shows have fantastic exhibits put together by collectors just like you and me. By going to a show (or shows) you can "participate" in the hobby that extends beyond your personal collection. Meeting like-minded collectors can enhance the stamp show experience. The exhibitors always appreciate your eyes on their collections and presentations. And, of course, the stamp dealers at these shows are happy to assist you in your search for a new stamp to fill in the open spot in your collection.

While all shows, big and small, can be great fun to visit, some of the best are those that meet the World Series of Philately (WSP) standard. According to the APS, WSP shows are U.S. national level shows that have gone through an accreditation process and must

follow standards (WSP Rules/Requirements) to maintain their status. These shows include a bourse (dealers with tables buying and selling), competitive exhibits, meetings and seminars and usually host functions of one or more philatelic societies.

Some of these WPS shows that are relatively close to our backyard include:

- NAPEX, June 7 – 9, 2024 - McLean, Virginia (just outside of Washington, DC)
- Great American Stamp Show, August 15 – 18, 2024 - Hartford, Connecticut (this year's location)
- NOJEX, September 27 – 29, 2024 – Hasbrouck Heights, New Jersey (new location)
- BALPEX, October 25 – 27, 2024 – Linthicum Heights, Maryland (new location)

If you can both contribute to the hobby and participate in the hobby, your own personal collection will benefit, and you will feel a real sense of satisfaction.

## MINUTES OF THE MARCH 19, 2024, GPSCC MEETING

President **Paul Miller** started the meeting with items of business.

**Old Business:** He reminded us that we continue to look for a volunteer to take over as Club Secretary since our Acting Secretary, **Letty Moon**, gave notice at last month's meeting that she will step down on June 1 after 12 years of service. Notices asking for a member to step up have appeared in every issue of *The Philly Philatelist* for a year and a half. Board members are offering to help any volunteer with the job. **Anne Gibby** suggested that perhaps someone knows a young person who would enjoy taking the minutes at meetings in order to learn more about philately.

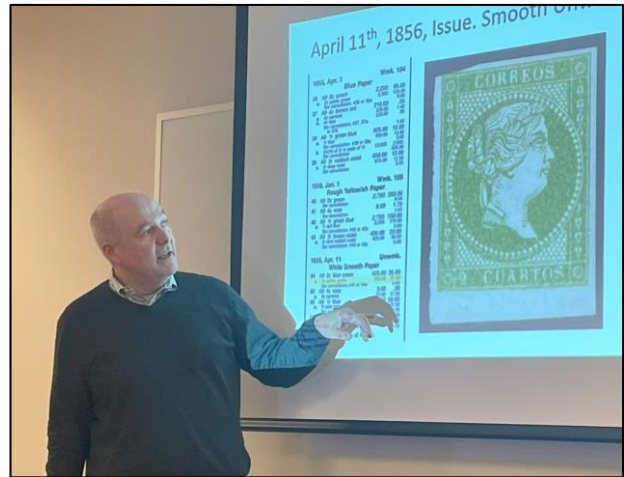
**New Business:** Paul announced that in response to his challenge to members to write articles for the newsletter, the first member-submitted article was published. In March Letty Moon's article, "Post Box Woes" was published. Paul reminded us that at the February meeting he offered to award Club members a free membership for 2025 if they submitted two articles that are published in 2024. So, start writing!

Paul also reminded us that the "Philatelic Gatherings" take place at the Chester County Historical Center (CCHC) in West Chester. They occur on the third Saturday of each month and always include two speakers with the opportunity for lunch afterwards. Presently our member **Bill Schultz** has a special exhibit at the CCHC entitled, *Letters and Post Cards: 1820-1920 Chester County*, which runs until June 1.

Paul told us that BALPEX is moving to a new venue for the October 25-27 show. It will now be held at the BWI Marriott Airport Hotel in Linthicum Heights, Maryland.

**Secretary's Report:** We have 53 members. We received a flyer for BUFPEX, the stamp show sponsored by the Buffalo Stamp Club to be held on March. 23 & 24 in Cheetowaga, New York.

**Program:** **Jaume Balsells** presented "The Spanish Isabella Issues of 1855-1859." He showed us the different values and types and why the slight differences in color, paper and watermark present a challenge for the U.S. collectors relying on the just the Scott Catalog.



*Jaume Balsells Presenting*



*Jaume Balsells's Title Slide*

**Show & Tell & Discuss:** We had two visitors tonight. One was **Kathleen O'Connell** who brought in her mother's small collection on Bicentennial memorabilia, which included two-dollar bills with Bicentennial issue stamps on them and stamped envelopes covering all the cities that Pope John Paul II visited in 1979. She was seeking information and was told that for the most part, the items were worth just face value.

(Continued on next page)

### MARCH 19, 2024 MINUTES (CONTINUED)

Our other visitor was **Phillip Sagar** of “Geezer’s Tweezers,” a stamp and coin store in Pikesville, Maryland. He was invited by long-time club member, **Rabbi Levitt**, who relocated to Baltimore about eight years ago.

**Robert Cohen** brought lots of free items for the taking, which he said were suitable for getting young people interested in philately. As a former teacher, he used these items in the past with elementary and middle school aged students.

**Ed Weisberg** brought in more books related to philately, also free for the taking.

Paul reminded us that we will have a speaker at the April meeting and the May meeting will be an “All Show & Tell” program where we each bring in something to show, pass around and talk about.

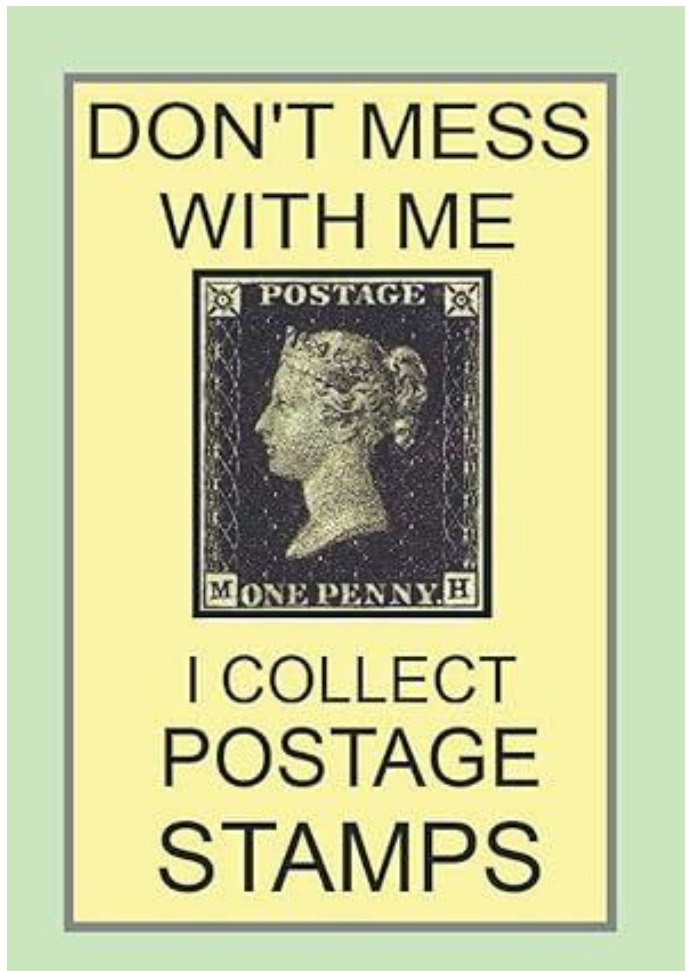
*Respectfully submitted by Letty Moon.*

#### DID YOU KNOW?

*Michael L. Wilson*

According to the U.S. Postal Service, the smallest Post Office in the U.S. is located in Ochopee, Florida and is 61.3 square feet. The building used to be a storage facility for irrigation pipes of an adjacent tomato farm. It was converted into a Post Office in 1953, after a fire that destroyed a previous Post Office and general store.

Anyone have a cover postmarked from this location? The ZIP code is 34141.



Poster courtesy of Bill Schultz!  
Anyone interested in a bumper sticker version?

## TRANS-PACIFIC AIRMAIL – THE FIRST FLIGHT

Paul F. Miller

Living on the east coast of the United States we often hear about the first Trans-Atlantic airmail flight. That event occurred when the U.S. Post Office inaugurated its official Trans-Atlantic airmail service to Europe on May 20, 1939. That’s almost 85 years ago.

But did you know that the first Trans-Pacific airmail flight occurred several years earlier?

On November 22, 1935, *China Clipper*, a Pan American Airways flying boat, took off from Alameda, California (near San Francisco) on its way to Hawaii, and ultimately Manila in the Philippines.

The first flight did not carry passengers. Instead, the flight crew only had to make room for 58 mail pouches stuffed with 111,000 envelopes weighing almost 2,000 pounds. At the time, it was the largest mail shipment ever taken on board an airplane.

This cargo was almost completely philatelic – envelopes sent by collectors who were looking to have a “first flight” mail piece. There were so many envelopes sent that the luxurious furnishings created for the Clipper’s future passengers had to be removed to make room for the mail pouches!

On the day of the inaugural flight, twenty-five thousand spectators watched the seaplane fly over San Francisco Bay and out of sight. One week after takeoff, the *China Clipper* landed in Manila in the Philippines and made history. The accomplishment marked a shift in aviation and communications. At the time, it took steamships anywhere from 15 to 16 days to complete the same trip to deliver messages

across the world.

The *China Clipper* arrived in Manila, eight thousand miles away from San Francisco Bay on the afternoon of November 29, 1935, after traveling through Honolulu, Midway Island, Wake Island and Guam. The actual flying time was 59 hours and 48 minutes.

This amazing feat was sensationalized, with the *China Clipper* being featured on postage stamps (of course), and on toys, souvenirs, and other memorabilia. A film, called *China Clipper*, was released in 1936, starring Humphrey Bogart. A new beer was created at the time, too – called Clipper beer!

The first *China Clipper* Airmail stamp (Scott C20) was issued on November 22, 1935, the day of the inaugural flight. The blue 25-cent stamp paid the rate for mail sent on one leg of the Trans-Pacific flight – from San Francisco to Hawaii, Hawaii to Guam, or Guam to Manila. A letter traveling the entire journey required 75-cents postage.

Two years later, the Trans-Pacific service was extended to Hong Kong and China. A green 20-cent stamp and a carmine 50-cent stamp (Scott C21 and C22, respectively) were issued for this service using the same design as the first stamp but without the “November 1935” inscription. The addition of the China route resulted in the three stamps being nicknamed the “China Clippers.”



## A TRANS-PACIFIC COVER TO AUSTRALIA, 1941

Michael L. Wilson

After editing Paul Miller's article in this issue of *The Philly Philatelist* on the first Trans-Pacific airmail in 1935, I thought to myself, "Myself, why not complement Paul's piece with an article on a Trans-Pacific cover with a stamp or two described by Paul?" Sometimes, it pays to talk to yourself, so here's a story on one such cover from 1941.

This Trans-Pacific cover did not travel to the Far East. Rather, it flew on Pan American Airline's (PAA or Pan Am) service from San Francisco to Auckland, New Zealand, a route that didn't exist until the summer of 1940. Indeed, Pan Am had been flying cargo and passengers to the Far East for almost three years before the first successful survey flight was made to New Zealand in August 1939. Regular passenger, mail and cargo service to New Zealand commenced in August 1940.

Like the journey to the Far East, the 8,000-mile flight from the West Coast of the U.S. to New Zealand was a slough. Departing every other Saturday from San Francisco with a brief stop in Los Angeles, it was a four-day excursion to Auckland with stops in Hawaii, Canton Island, and New Caledonia. On the other hand, the same trip by steamer could take 17 days or more, so four days doesn't sound so bad.

Pan Am flew the Boeing 314 on this route, and by all accounts, it was a glamorous way to travel – gourmet meals, elegant sleeping berths, and comfortable lounges. But it came with a steep fare. A one-way San Francisco-to-Auckland ticket would set you back \$650 in 1941, equivalent to about \$13,700 today.

This cover was postmarked in New Orleans at 6:30 p.m. Central Time on May 30, 1941. After making its way to the West Coast, it traveled to New Zealand on the Pan Am flight that departed San Francisco on either May 31 or June 14. Unfortunately, there is no receiving date stamp to confirm which flight it was. To have been carried on the May 31 flight, it would have had to arrive by 8:30 a.m. Pacific Time on May 31, which was the cutoff time for accepting mail for the Trans-Pacific journey.

I'm sure the sender, International Lubricant Corporation of New Orleans, was hoping it made the May 31 flight given what it paid to send this letter. This cover has \$3.50 of postage – equal to about \$74 in today's money – consisting of four 50-cent Scott C22, six 20-cent Scott C9, and one 10-cent Scott C7. Since the postage rate to Australia was 70-cents per half ounce, this was a hefty letter weighing in at 2.5 ounces.





## A TRANS-PACIFIC COVER TO AUSTRALIA, 1941 (CONTINUED)

International Lubricant Company was chartered in the late 1920s. It produced a variety of oils and greases and was widely respected by the Armed Forces during World War II for the special greases it produced to keep equipment running in extremely cold, hot or wet conditions. It was acquired by Shell Oil Company in 1946 and was operated as a separate subsidiary for many years.

I don't have the enclosure, but this was probably a business-to-business communication since the recipient – William Stevenson – was an oil merchant associated with Evans Deakin & Company of Brisbane, Australia, an engineering company and shipbuilder that operated between 1910 and 2001. I have not been able to discover much about Mr. Stevenson other than that he was born in Norway in 1871 and died in Brisbane in 1942. I would love to know why and when he moved to Australia.

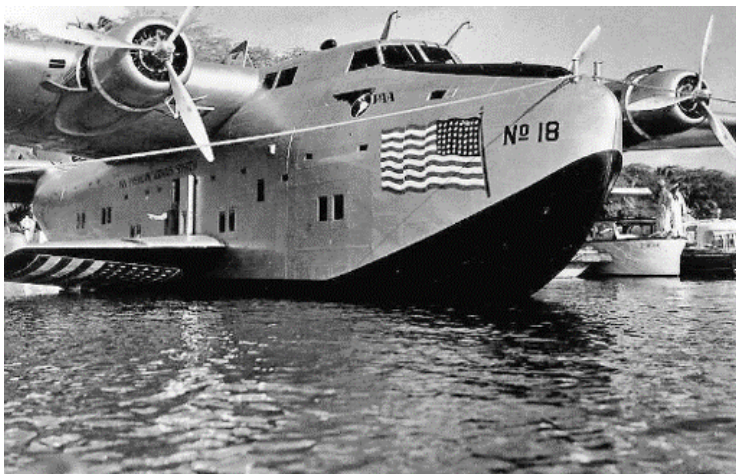
Two other items of note about this cover. First, as you can see from the left-hand side, it was opened by a censor in Australia. Australia entered World War II on September 3, 1939, following the government's acceptance of the United Kingdom's declaration of war on Germany. As a belligerent, all mail entering the country was subject to inspection. The U.S., of course, would enter the war about six months after this letter arrived.

Second, Pan Am flew to New Zealand but not to Australia because the British refused to grant it landing rights in the latter. Consequently, this cover's final two legs were a 1,400-mile flight from Auckland to Sydney on an airline operated by Tasman Empire Airways Limited followed by a 570-mile journey north to Brisbane.

The Boeing 314 had a short career. It was produced by Boeing from 1938 to 1941 and only 12 were built. Nine were operated by Pan Am and three by British Overseas Airways Corporation. Pan Am's planes were pressed into U.S. military service during World War II, and although several were returned to Pan Am after the war, they were obsolete. The advantage of the Boeing 314 was that as a flying boat, it didn't require long concrete airways, but many of those were built during the war to accommodate heavy bombers. In addition, new long-range airlines like the Lockheed Constellation and the DC-4 were introduced after the war and those were far easier to fly than the Boeing 314. The last Pan Am Boeing 314 flew in 1946 and all the planes were eventually scrapped.



*Pan Am 1940's  
Pacific Route  
Souvenir Pin*



*Pan American's Boeing 314 Clipper at her base at Pearl Harbor after arriving from Alameda, California in 1940. This [9-1/2 minute](#) video on the Boeing 314 is well worth the time.*



*Dining Room on Board a Boeing 314*

## PHILATELIC GATHERING, MARCH 23, 2024

On March 23, 2024, Philatelic Gathering members and guests met at the Chester County Historical Center (CCHC) to hear two excellent lectures by two well-respected philatelists and postal historians: **Mike Wilson** on “A Tour of U.S. Collecting Possibilities Based on Advertising Covers,” and **Kean Spencer**, who shared his collection of Danish West Indies (D.W.I.) and U.S. Virgin Islands stamps, including postage, revenues, tobacco revenues, Christmas seals and postal stationery.

Of special note were Mike’s hotel advertising cover from 1850 franked with a single copy of Scott 1 and postmarked in Philadelphia (below left), and Kean’s copies of the rarely seen D.W.I. postal cards with wood grain watermarks (below right), as well as the St. Croix provisional tobacco stamps. Following a

lively Q&A session, all adjourned to a local restaurant for conversation, cuisine and camaraderie.

The next meeting of the Philatelic Gathering is scheduled for 10:00 a.m. to noon on April 20, 2024. The speakers will be **Alan Warren** on “Tibet: Stamps and Postal History” and **Bruce Marsden** on “Collecting the 1949 Engineering and Landscape Issue of Switzerland.” Alan and Bruce are both GPSCC members.

The CCHC is located at 225 N. High Street, West Chester, Pennsylvania. For more information on joining the Philatelic Gathering, contact **Kean Spencer** ([keanwspencer1@gmail.com](mailto:keanwspencer1@gmail.com)) or **Dr. Charles J. DiComo** ([charlesdicomo@gmail.com](mailto:charlesdicomo@gmail.com)).



Left: Scott 1 on Folded Letter with Columbia House Ad Handstamp. Above: D.W.I. Postal Card with Wood Grain Watermark.

## LETTERS AND POST CARDS

Through June 1, 2024, at CCHS

Guest curator and GPSCC member **Bill Schultz** shares hundreds of examples from his remarkable collection of covers (envelopes) and colorful post cards that illustrate U.S. postal delivery from and to West Chester from 1820 to 1920.

In a rare opportunity, visitors will also be able to view “Domestic Rates – U.S.P.O. Acts of 1792 to 1863,” Schultz’s nationally award-winning postal history exhibit.

